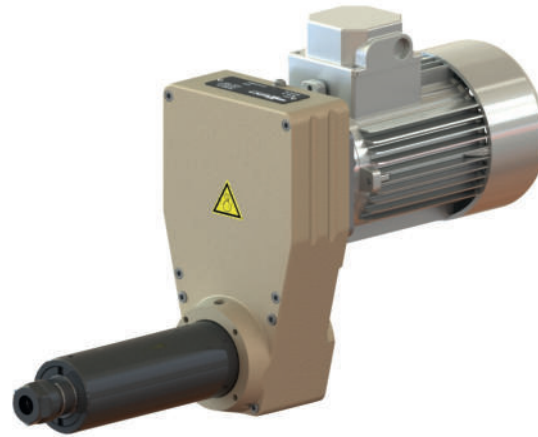


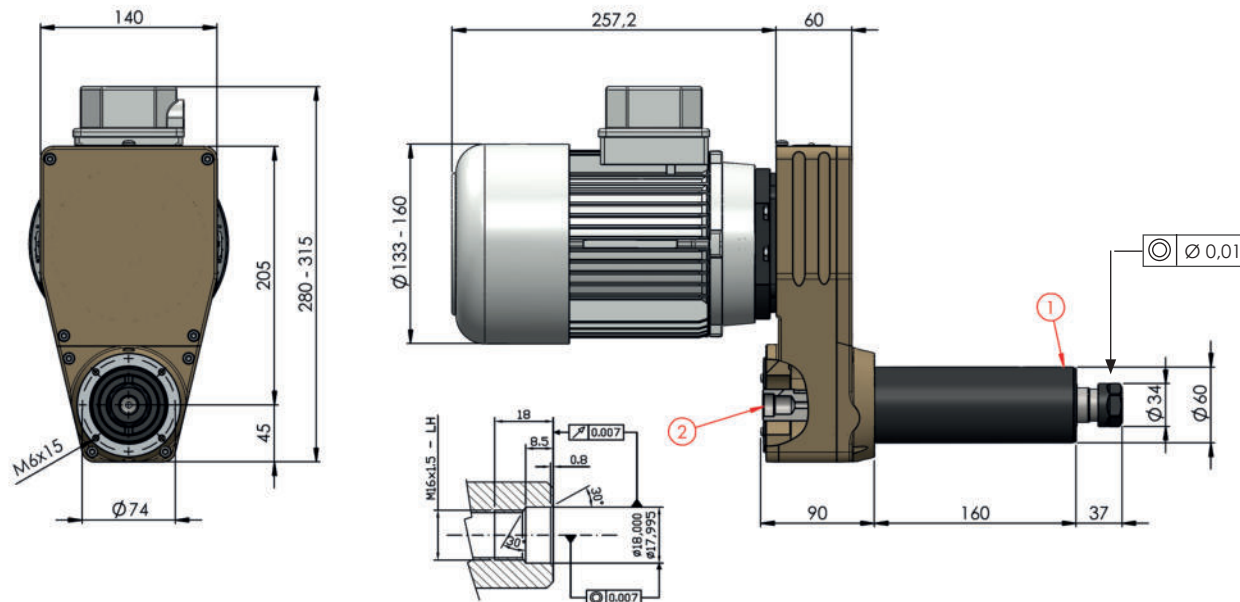


SU10

Drilling Capacity Capacità di foratura	ø12 on steel Rm50 ø12 su acciaio Rm50
Spindle Mandrino	ER20 DIN6499 ER20 DIN6499
Spindle speed Velocità mandrino	from 500 to 9000 rpm da 500 a 9000 g/1'
Motor Power Potenza Motore	from 0.37 to 1.1 Kw da 0.37 a 1.1 Kw

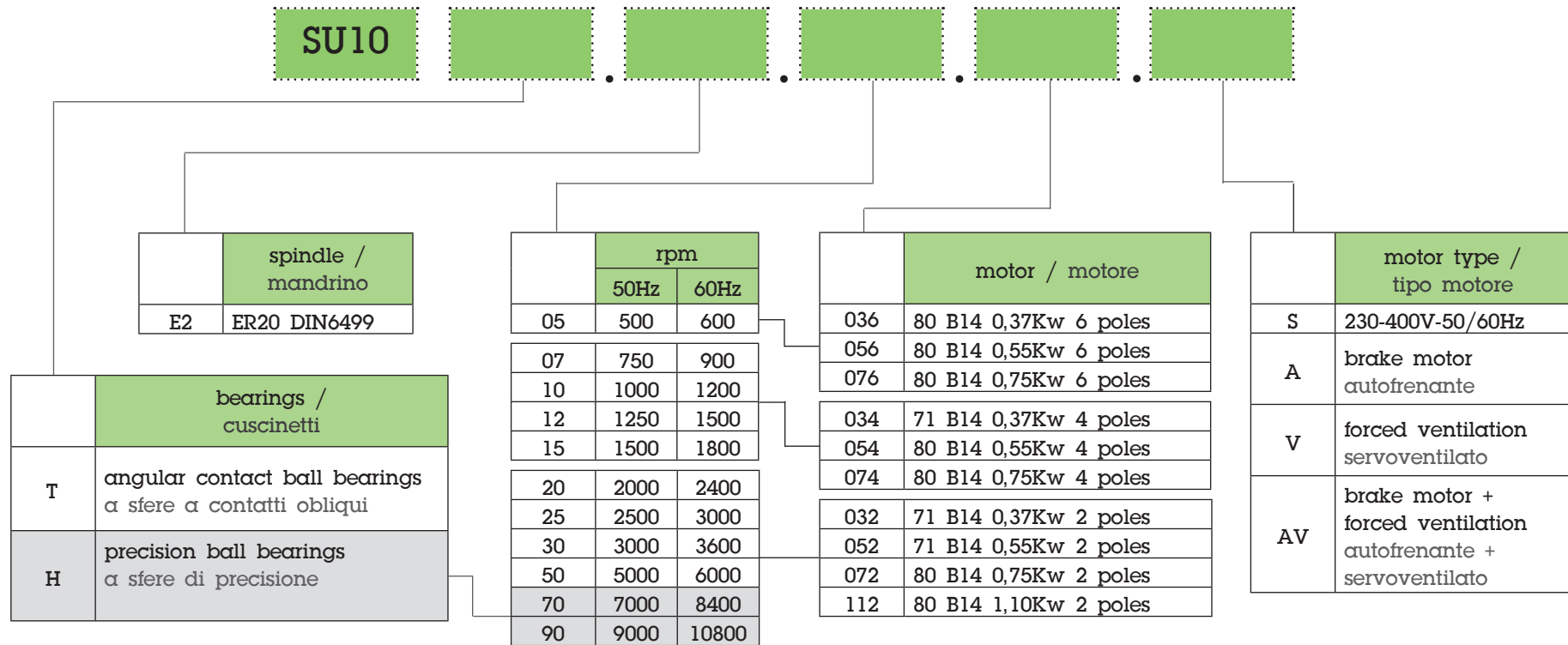


- Working unit suitable for drilling, milling, reaming and boring.
- Angular contact ball bearings.
Optional: precision angular contact ball bearings.
- Spindle concentricity 0,01.
- Air inlet 0.5bar for internal spindle pressurization (1).
- Spindle with bore to coolant inlet (2).
On request rotary union.
- Standard color: Beige RAL 1001.
Other colors on request.
- Weight from 8 Kg



- Unità di lavoro idonea per foratura, fresatura, alesatura e barenatura.
- Cuscinetti a sfere con contatti obliqui.
Su richiesta cuscinetti a sfere di precisione con contatti obliqui.
- Concentricità mandrino 0,01.
- Ingresso aria 0,5bar per pressurizzazione interna mandrino (1).
- Mandrino forato per passaggio lubro-refrigerante (2).
Su richiesta giunto rotante.
- Colore standard: Beige RAL 1001.
Altri colori su richiesta.
- Peso da 8 Kg

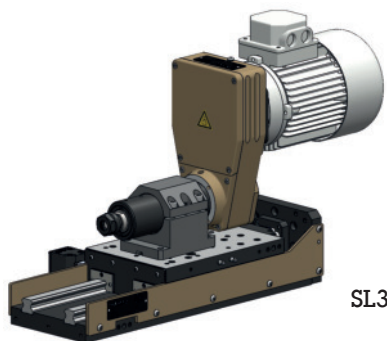
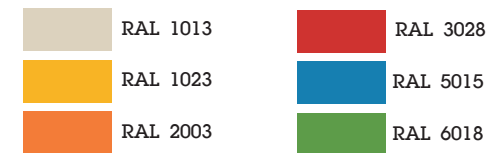
SU10



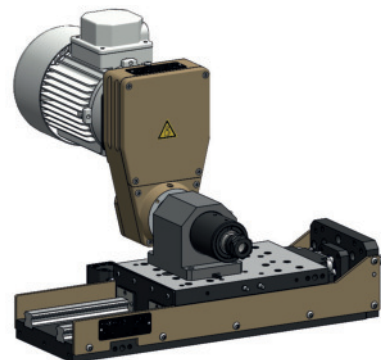
STANDARD COLOR



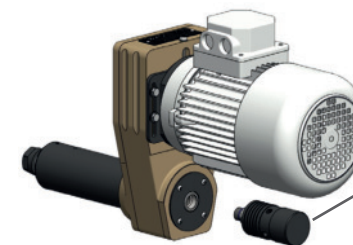
OPTIONAL COLORS



SL30E



SL30E



optional:

rotary union
 M16x1,5 LH
 giunto rotante
 M16x1,5 LH