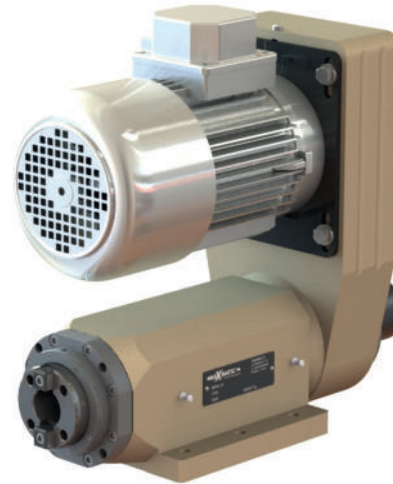




SU30

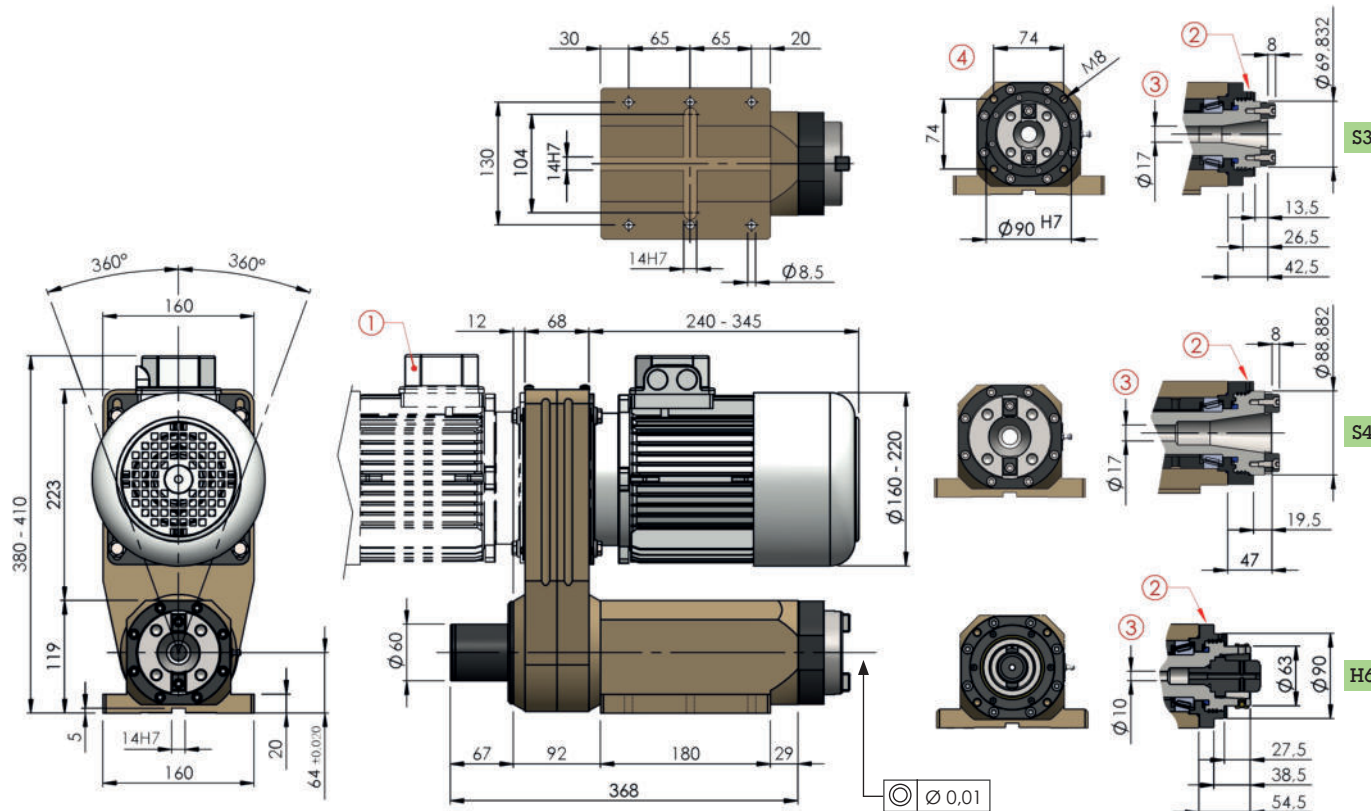
Drilling Capacity Capacità di foratura	ø30 on steel Rm50 ø30 su acciaio Rm50
Spindle Mandrino	ISO30 DIN2079 ISO40 DIN2079 HSK63-C DIN 69893
Spindle speed Velocità mandrino	from 100 to 8500 rpm da 100 a 8500 g/1'
Motor Power Potenza Motore	from 0.75 to 4.00 Kw da 0.75 a 4.00 Kw



- Working unit suitable for drilling, milling, reaming and boring.
- Prearranged for installation on slides type SL30.
- Taper roller bearings.
Optional: precision angular contact ball bearings.
- Installation of motor in front/rear position (1).
Transmission housing can be rotated on 360°.
- Spindle concentricity 0,01.
- Air inlet 0.5bar for internal spindle pressurization (2).
- Spindle with bore for toolholder drawbar (3).
Optional: coolant through drawbar and rotary union.
- Installation of multispindle head possible only with spindle ISO30 (4).
- Standard color: Beige RAL 1001.
Other colors on request.
- Weight from 35 Kg



- Unità di lavoro idonea per foratura, fresatura, alesatura e barenatura.
- Predisposta per installazione su slitte serie SL30.
- Cuscinetti a rulli conici.
Su richiesta cuscinetti a sfere di precisione con contatti obliqui.
- Installazione motore in posizione anteriore o posteriore (1). Carter motore ruotabile a 360°.
- Concentricità mandrino 0,01.
- Ingresso aria 0,5bar per pressurizzazione interna mandrino (2).
- Mandrino forato per passaggio tirante (3).
Su richiesta tirante forato per passaggio lubro-refrigerante e giunto rotante.
- Installazione teste multimandrino possibile solo con mandrino ISO30 (4).
- Colore standard: Beige RAL 1001.
Altri colori su richiesta.
- Peso da 35 Kg









SU30

	spindle / mandrino	rpm			motor / motore		motor type / tipo motore		motor position / posizione motore	
		50Hz	60Hz							
S3	ISO30 DIN2079	01	100	120	80...	motor reducer 0,75Kw 4 poles	S	230-400V-50/60Hz	F	front anteriore
S4	ISO40 DIN2079	02	200	240	81...	motor reducer 1,50Kw 4 poles	A	brake motor autofrenante	R	rear posteriore
H6	HSK63-C DIN69893	03	300	360	076	90 B14 0,75Kw 6 poles	V	forced ventilation servoventilato		
		05	500	600	116	90 B14 1,10Kw 6 poles	AV	brake motor + forced ventilation autofrenante + servoventilato		
		07	700	840	156	100 B14 1,50Kw 6 poles				
		08	800	960	226	112 B14 2,20Kw 6 poles				
		11	1100	1320	074	80 B14 0,75Kw 4 poles				
		15	1500	1800	114	90 B14 1,10Kw 4 poles				
T	roller bearing a rulli conici	22	2200	2640	154	90 B14 1,50Kw 4 poles				
		30	3000	3600	224	100 B14 2,20Kw 4 poles				
H	precision ball bearings a sfere di precisione	40	4000	4800	304	100 B14 3,00Kw 4 poles				
		60	6000	7200	404	112 B14 4,00Kw 4 poles				
		85	8500	10200	072	80 B14 0,75Kw 2 poles				
					112	80 B14 1,10Kw 2 poles				
					152	90 B14 1,50Kw 2 poles				
					222	90 B14 2,20Kw 2 poles				
					302	100 B14 3,00Kw 2 poles				
					402	112 B14 4,00Kw 2 poles				

STANDARD COLOR

RAL 1001

OPTIONAL COLORS

	RAL 1013		RAL 3028
	RAL 1023		RAL 5015
	RAL 2003		RAL 6018

