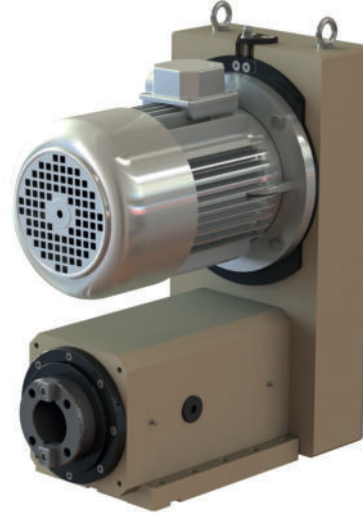




SU60

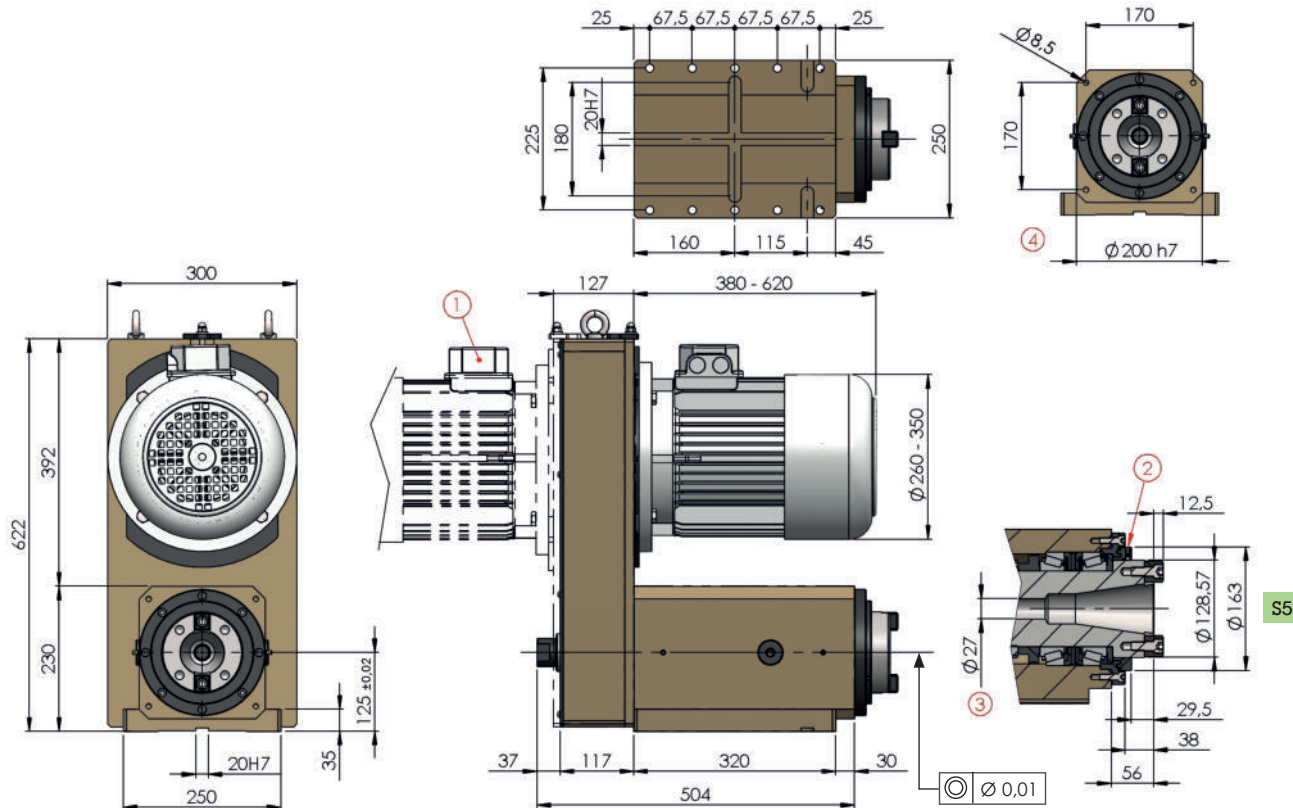
Drilling Capacity Capacità di foratura	ø60 on steel Rm50 ø60 su acciaio Rm50
Spindle Mandrino	ISO50 DIN2079
Spindle speed Velocità mandrino	from 100 to 3000 rpm da 100 a 3000 g/1'
Motor Power Potenza Motore	from 5.50 to 18.50 Kw da 5.50 a 18.50 Kw



- Working unit suitable for drilling, milling, reaming and boring.
- Taper roller bearings.
Optional: precision angular contact ball bearings.
- Installation of motor in front/rear position (1).
Transmission housing can be rotated on 360°.
- Spindle concentricity 0,01.
- Air inlet 0.5bar for internal spindle pressurization (2).
- Spindle with bore for toolholder drawbar (3).
Optional: coolant through drawbar and rotary union.
- Installation of multispindle head (4).
- Standard color: Beige RAL 1001.
Other colors on request.
- Weight from 200 Kg



- Unità di lavoro idonea per foratura, fresatura, alesatura e barenatura.
- Cuscinetti a rulli conici.
Su richiesta cuscinetti a sfere di precisione con contatti obliqui.
- Installazione motore in posizione anteriore o posteriore (1). Carter motore ruotabile a 360°.
- Concentricità mandrino 0,01.
- Ingresso aria 0,5bar per pressurizzazione interna mandrino (2).
- Mandrino forato per passaggio tirante (3).
Su richiesta tirante forato per passaggio lubro-refrigerante e giunto rotante.
- Installazione teste multimandrino (4).
- Colore standard: Beige RAL 1001.
Altri colori su richiesta.
- Peso da 200 Kg



S5

SU60

*	spindle / mandrino
S5	ISO50 DIN2079

	rpm	
	50Hz	60Hz
01	100	120
02	200	240
03	300	360

05	500	600
07	750	900
11	1100	1320
15	1500	1800

	bearings / cuscinetti
T	roller bearings a rulli conici
H	precision ball bearings a sfere di precisione

22	2200	2640
30	3000	3600

	motor / motore
83...	motor reducer 5,50Kw 4 poles
84...	motor reducer 7,50Kw 4 poles
85...	motor reducer 11,00Kw 4 poles

556	132 B5 5,50Kw 6 poles
756	160 B5 7,50Kw 6 poles
K16	160 B5 11,00Kw 6 poles

554	132 B5 5,50Kw 4 poles
754	132 B5 7,50Kw 4 poles
K14	160 B5 11,00Kw 4 poles
K54	160 B5 15,00Kw 4 poles
K84	160 B5 18,50Kw 4 poles

552	132 B5 5,50Kw 2 poles
752	132 B5 7,50Kw 2 poles
K12	160 B5 11,00Kw 2 poles
K52	160 B5 15,00Kw 2 poles
K82	160 B5 18,50Kw 2 poles

	motor type / tipo motore
S	230-400V-50/60Hz
A	brake motor autofrenante
V	forced ventilation servoventilato
AV	brake motor + forced ventilation autofrenante + servoventilato

	motor position / posizione motore
F	front anteriore
R	rear posteriore

* On request other spindle types
Su richiesta altri mandrini

STANDARD COLOR

RAL 1001

OPTIONAL COLORS

RAL 1013

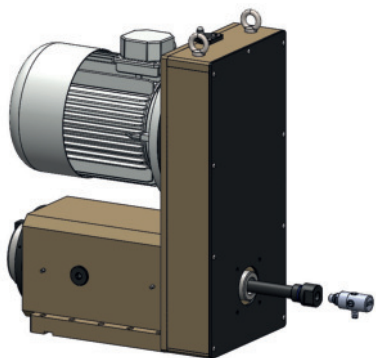
RAL 1023

RAL 2003

RAL 3028

RAL 5015

RAL 6018



optional:

rotary union
M16x1,5 LH
giunto rotante
M16x1,5 LH